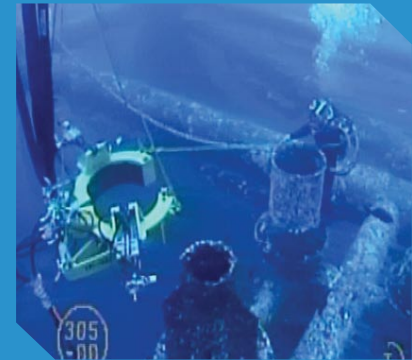




Pin Drill

Pin drills are used to prepare cut sections of casing for securing and rigging. Wachs subsea drills are hydraulic and utilize power and control equipment common in other cutting machines. Auto feed is standard.

For single rig points, these drills can be modified to mount anywhere on a casing to drill holes up to 4" in diameter. The Pin Drill incorporates two opposing drills on a mounting frame for drilling precisely aligned holes. Bolts or pins can then be inserted to secure multi-layered casings. Each mounting frame fits a range of casing sizes, and various frame sizes are available.



FEATURES

- Large hole diameter
- Variable speed hydraulic drive (250 RPM max)
 - Max 15 GPM @ 1500 PSI (spindle drive)
 - 5 GPM @ 1500 PSI (auto feed)
- Hydraulic auto feed (0 - 0.56"/min)
- Corrosion resistant materials
- Sealed for use in up to 350 feet of seawater
- Versatile mounting configurations

SPECIFICATIONS

Coated/corrosion resistant linear guides
Field adjustable overload clutch
Utilizes Morse Taper Tooling (#4 max)
Anodized aluminum components
Manual override on auto feed
Shielded thrust bearings & grease port on feed screw
Removable seal carrier
Corrosion resistant SS precision acme feed screw
Hydraulic drive motors
Finish: powder coat yellow



E.H. WACHS COMPANY

600 Knightsbridge Pkwy. • Lincolnshire, Illinois 60069 | 800.323.8185 • +1.847.537.8800 worldwide • +1.847.520.1147 fax

www.wachsco.com